

WeiMonitor



User Manual

Version 1.2.0.20

Manual_Weimonitor_V2

INDEX

1 INTRODUCTION	3
2 INSTALLATION	3
3 WIZARD CONFIGURATION	7
3.1 LANGUAGE CONFIGURATION.....	7
3.2 SCALE CONFIGURATION	8
3.3 OPERATING MODE.....	10
4 MAIN SCREEN	14
6 WARRANTY AND USER LICENSE	20

1 Introduction

ScaleMonitor.NET is a software that allows one to real-time display weight values detected by one or more scales, by an indicator to show whether they are within the values of tolerance, and to collect and manage data collected. In order to view the data, please, insert and configure scales and choose how to receive data.

It also possible to manage users and select the desired language.

2 Installation

The steps to install the program are 6:

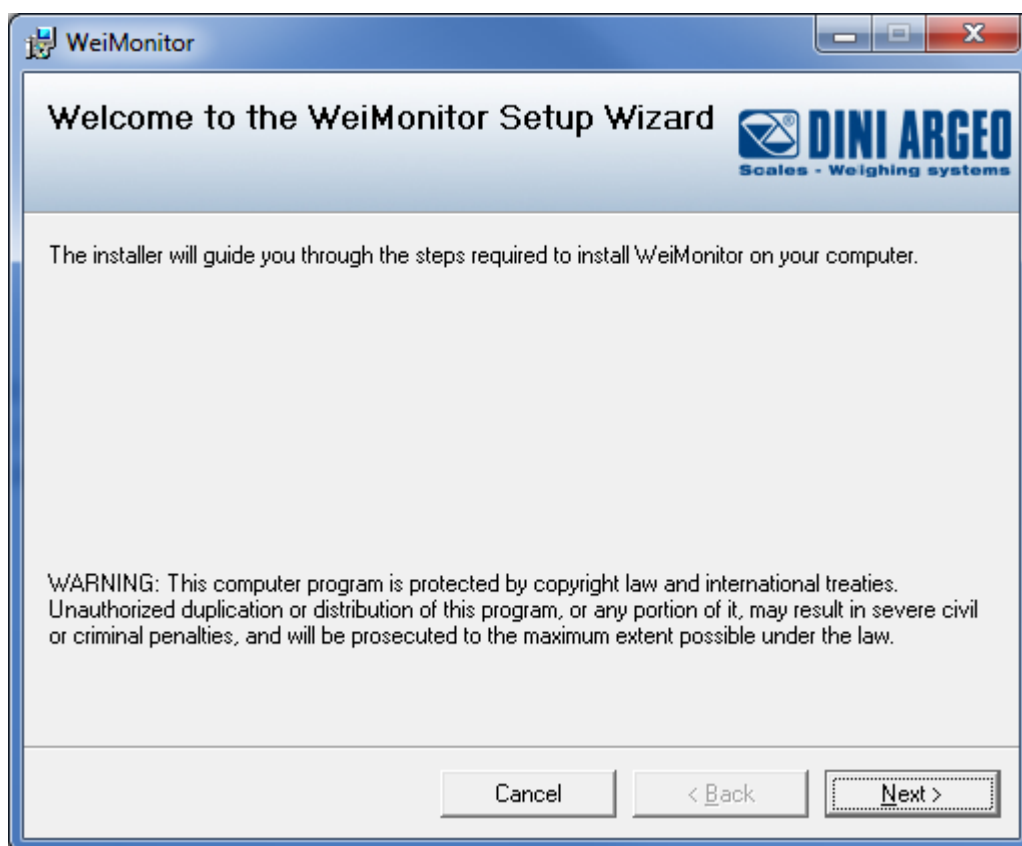


Figure 1 – Setup (step 1)

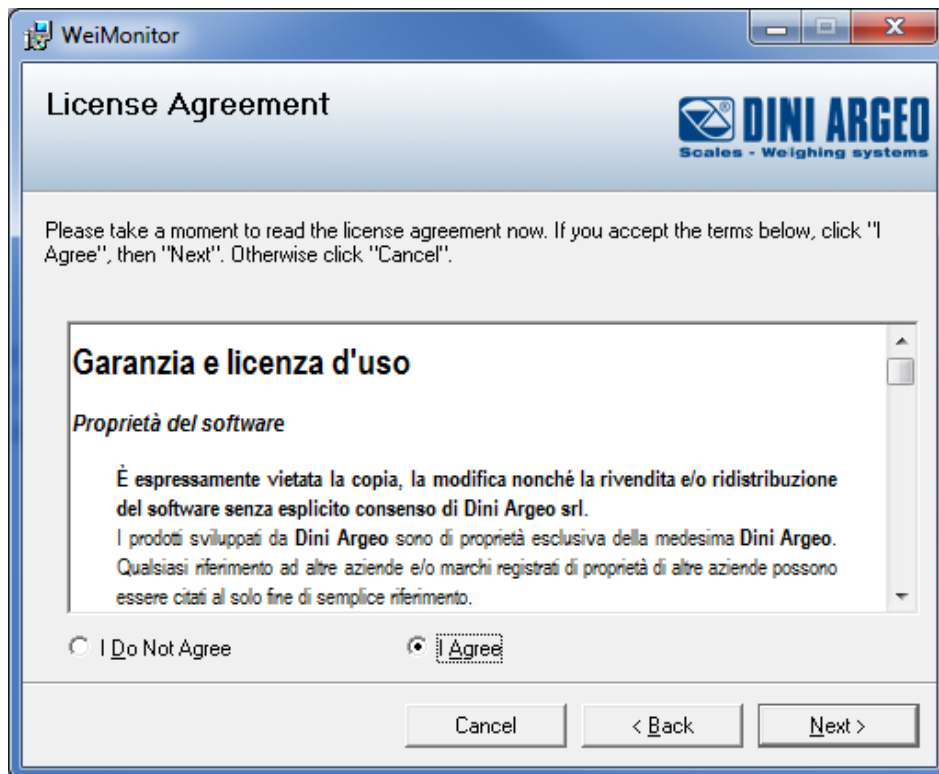


Figure 2 – Setup (step 2)

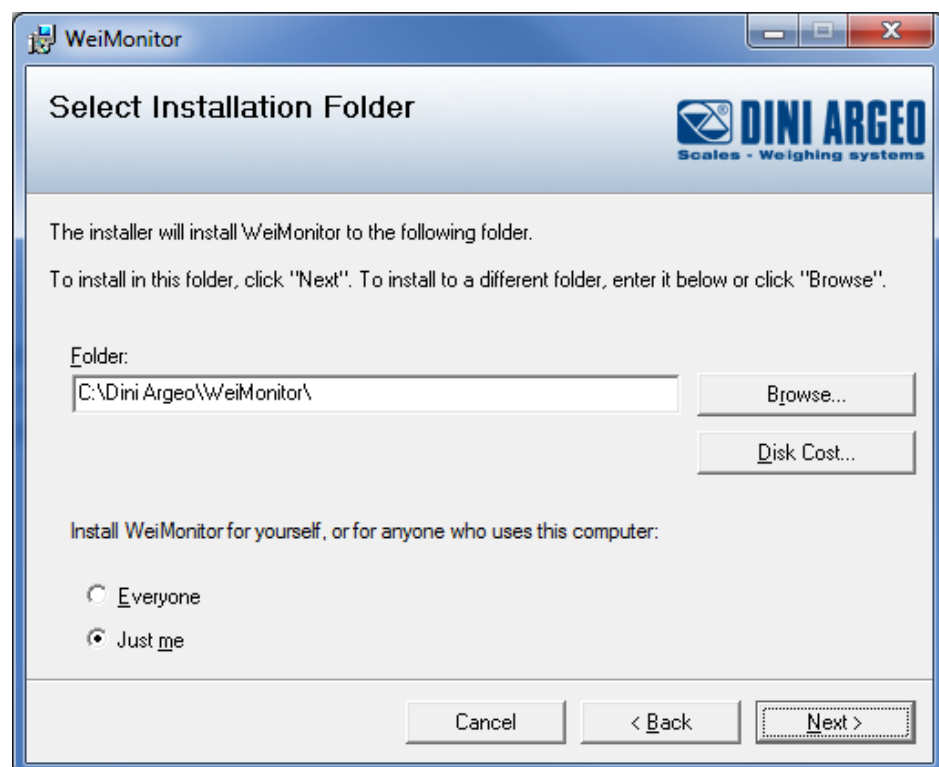


Figure 3 – Setup (step 3)

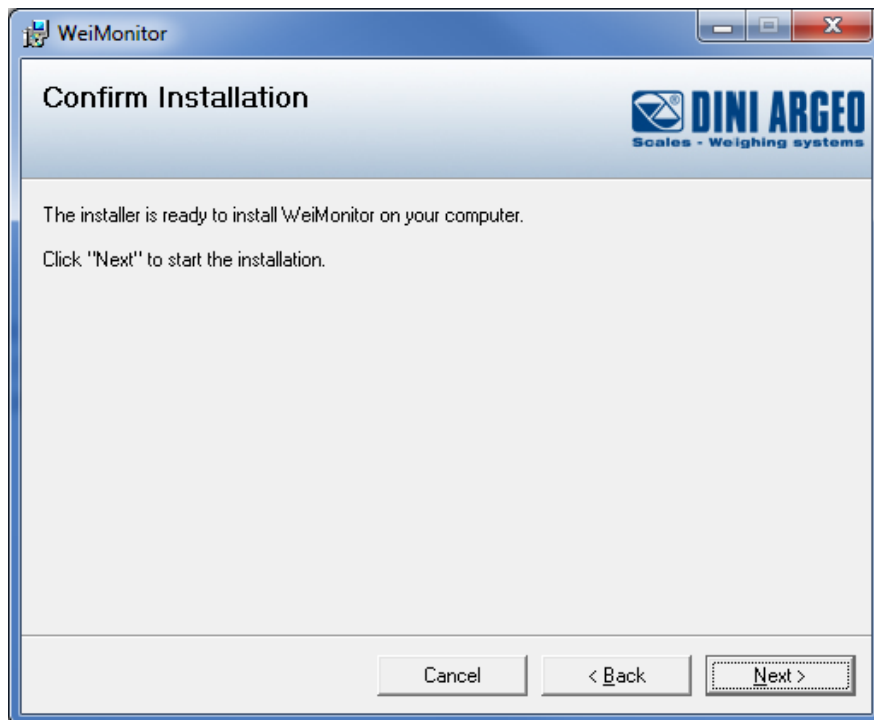


Figure 4 – Setup (step 4)

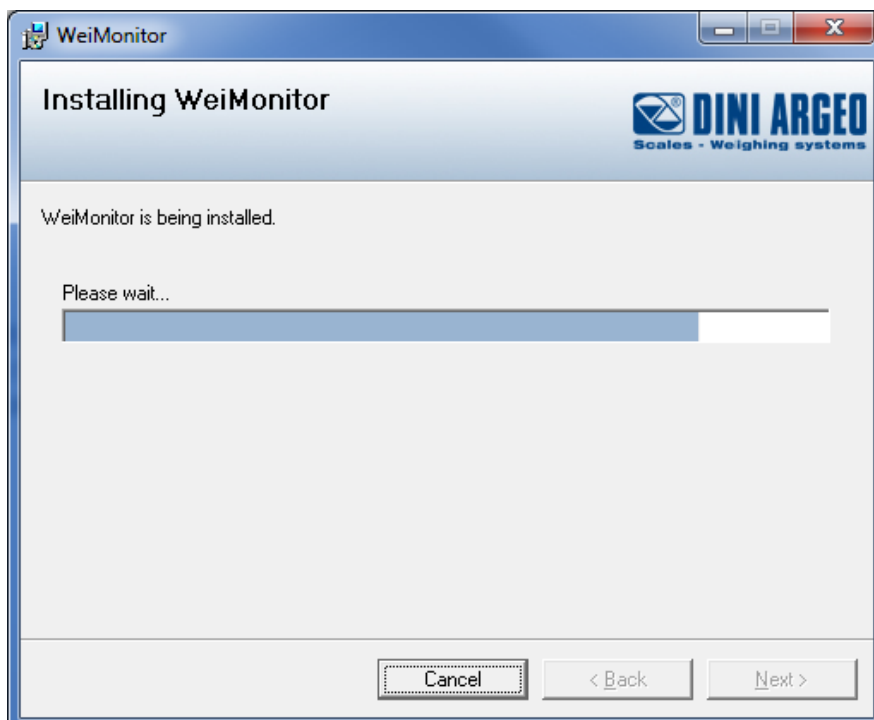


Figure 5 – Setup (step 5)

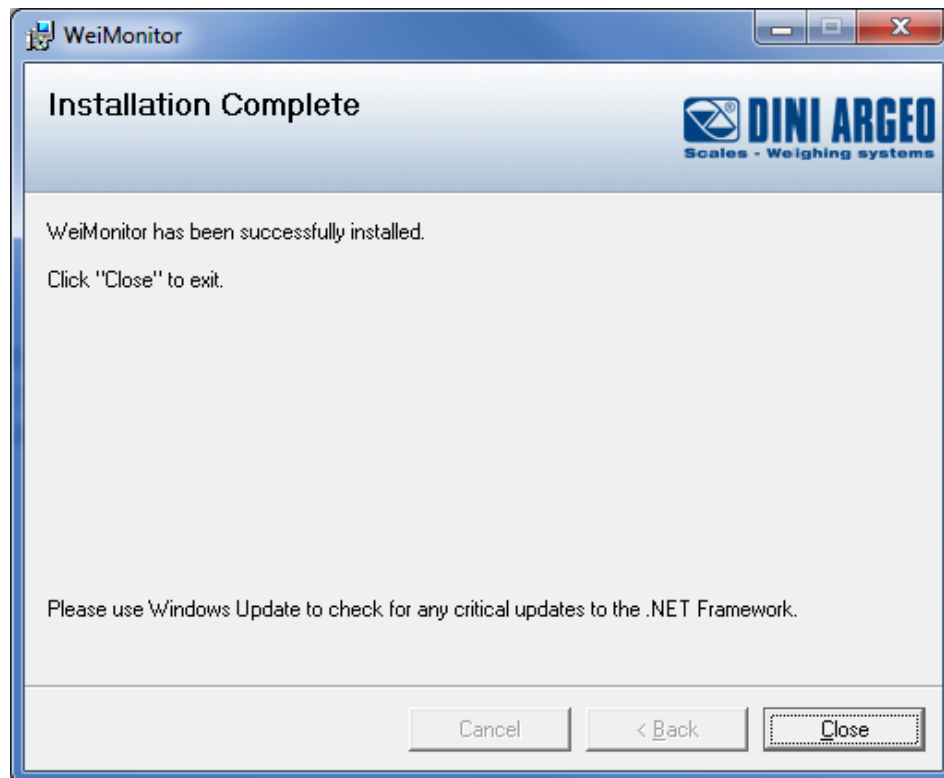


Figure 6 – Setup (step 6)

3 Wizard configuration

At the first start, a software wizard setup will be run to make the use of the program easy and intuitive.

The configuration is divided in its interior in 4 steps:

- Language configuration
- Scale configuration
- Operation mode
- File save

3.1 Language configuration

In this screen you can choose the desired language from the language list

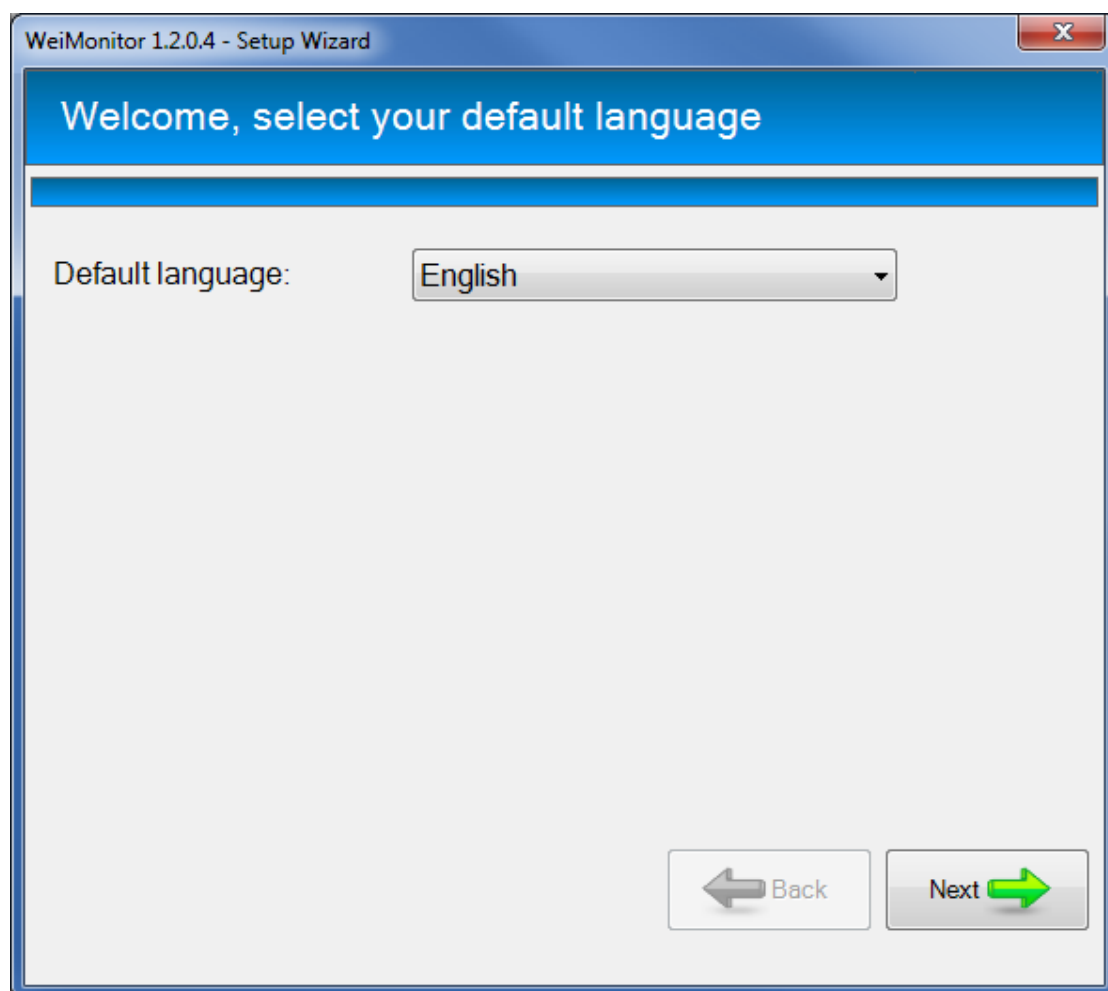


Figure 7 – Selection of the language

3.2 Scale configuration

The scale can be configured in 2 different ways:

- *Automatic search.* This mode allows the software to look for all serial ports on present scales.
- *Manual search.* This mode allows the user to set the communication type of the scale

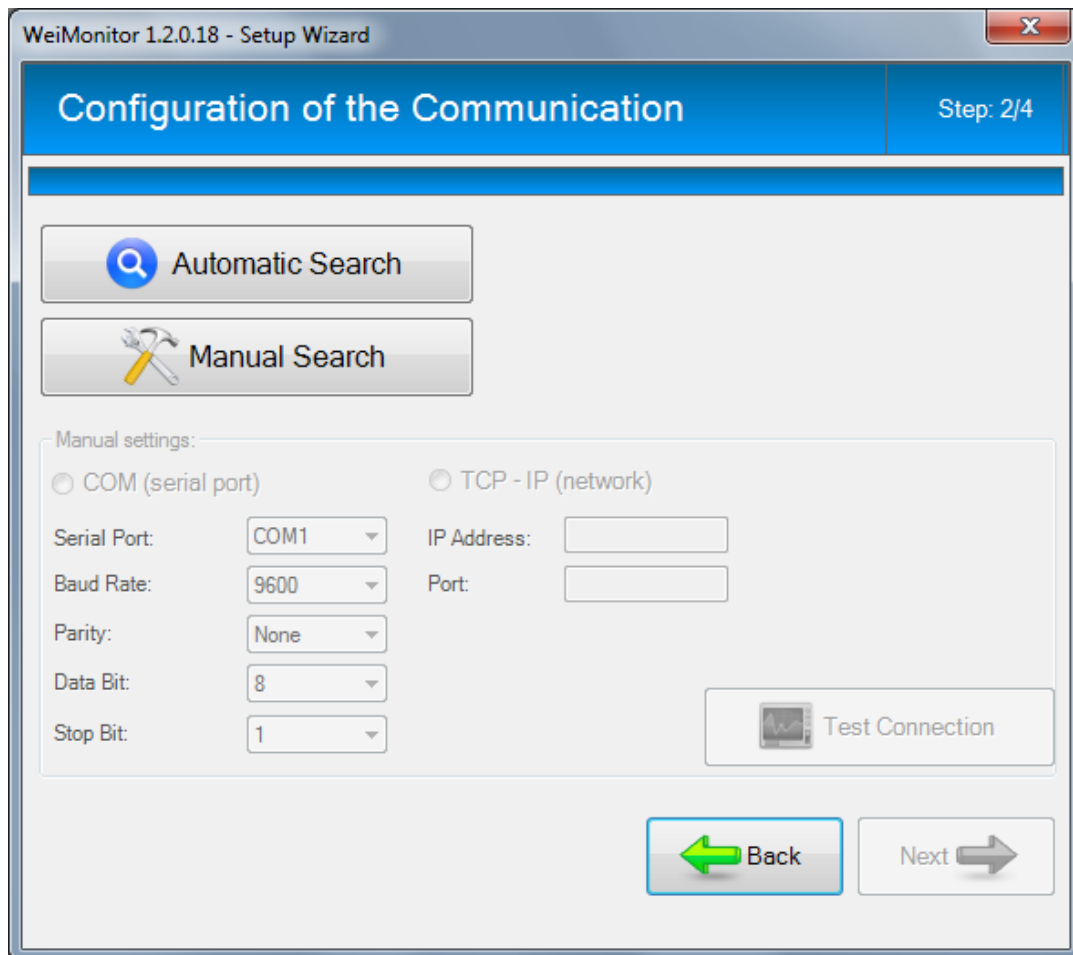


Figure 8 – Scale configuration

If you choose to use the *Automatic Search*, the screen below will be displayed with the relevant information related to ongoing research.

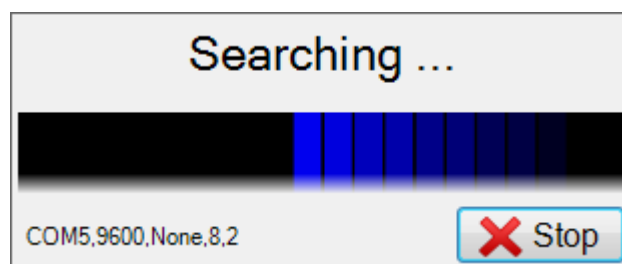


Figure 9 – Automatic Search

In the *Manual Search*, you can change the settings of the communication (COM, TCP-IP, UDP) with their characteristics.

The button **Test the connection** is designed to check whether there is a scale. The values chosen can establish communication between a software and a scale.

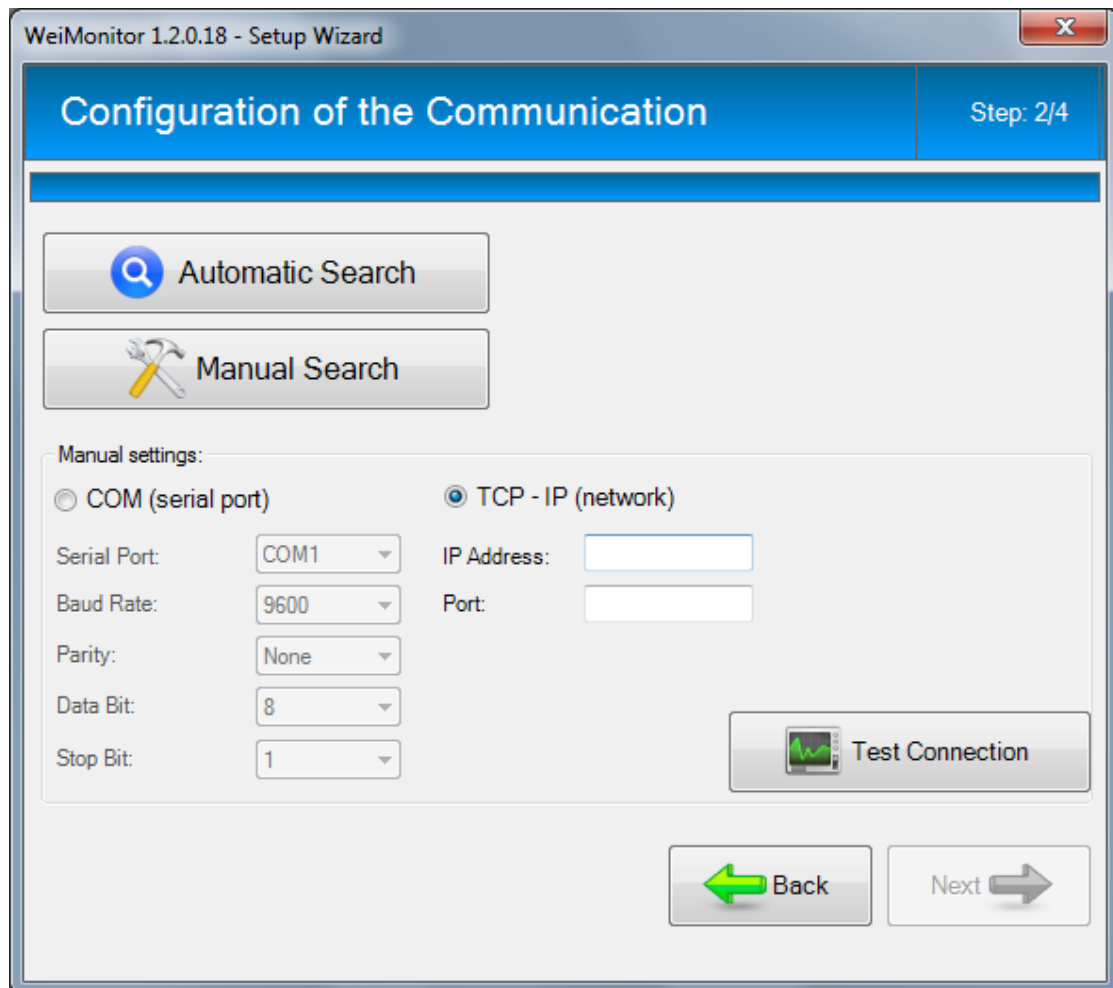


Figure 10 – Manual search

The **Next** button will be enabled only when a scale was found.

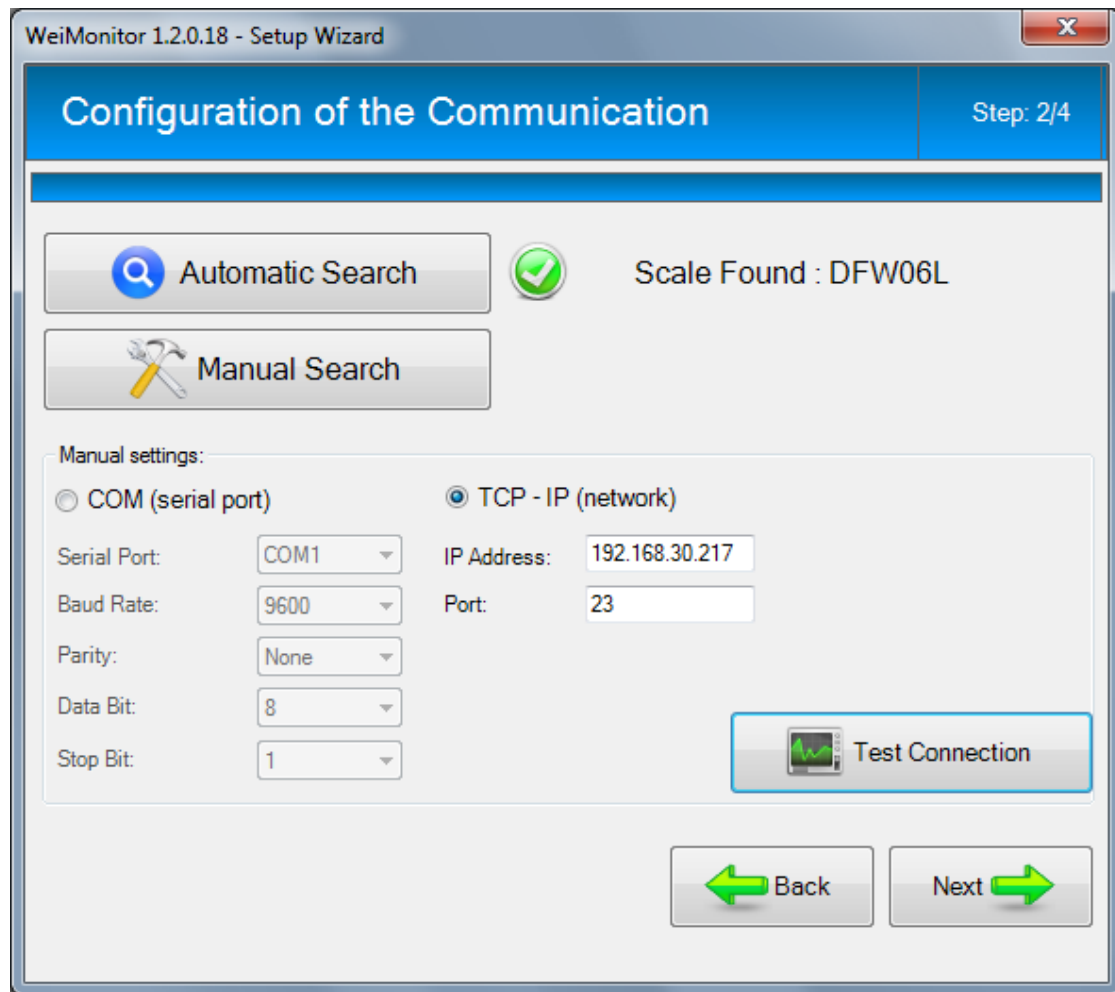


Figure 11 – Scale Found

3.3 Operating mode

In this screen you can choose the operation mode of the scale.
They are 2 of them:

- *From PC*
- *From scale*

In the first case, **from PC** → by the PC **keyboard**, the storage will only occur when the weight is stable. In case of **a mode from PC** → **by Time**, the storage will occur even if the weight is unstable.

The functioning mode from PC allows you to store a weight or by pressing a keyboard button or by programming the save according to a fix time interval.

WeiMonitor 1.2.0.4 - Setup Wizard

Way to Working

☒ to PC:

☒ PC keyboard:

Keys: ☐ PID

☐ In Time:

☐ Minutes ☐ Seconds ☐ Milliseconds

☐ Daily Start at Stop at

☐ to Scale:

(Program to scale the data to be recorded) Separator

Figure 12 – Functioning mode

If you select to use the *PC functioning mode*, the screen below will appear:

WeiMonitor 1.2.0.4 - Setup Wizard

Way to Working

☒ to PC:

☒ PC keyboard:

Keys: None F2 ☐ PID

☐ In Time:

☐ Minutes 1 ☐ Seconds 1 ☐ Milliseconds 1

☐ Daily Start at Stop at

☐ to Scale:

(Program to scale the data to be recorded) Separator .

Back Next

Figure 13 – PC functioning mode

You may choose whether to use the keypad buttons or a configured time interval to store.

☒ In Time:

☐ Minutes 1 ☒ Seconds 2 ☐ Milliseconds 1

☐ Daily Start at Stop at

Figure 14 – Setting by Time

In the category *scale functioning mode*, the string directly comes from the scale and you can set the separator.

☒ to Scale:

(Program to scale the data to be recorded) Separator .

Figure 15 – Scale functioning mode

3.4 Save in a file

It makes possible to store the weights in case you want to keep track over time.

In the case of storage, you can choose the file type (.txt or .csv) and if you want to save weights day by day (To create file with automatic name).

The file with an automatic name will be automatically generated by the caption YYYY-MM-DD in the selected folder.

The default folder to save to file is: *C:\Syntweb\Data*, but you can change the path through the button *Change the path*.

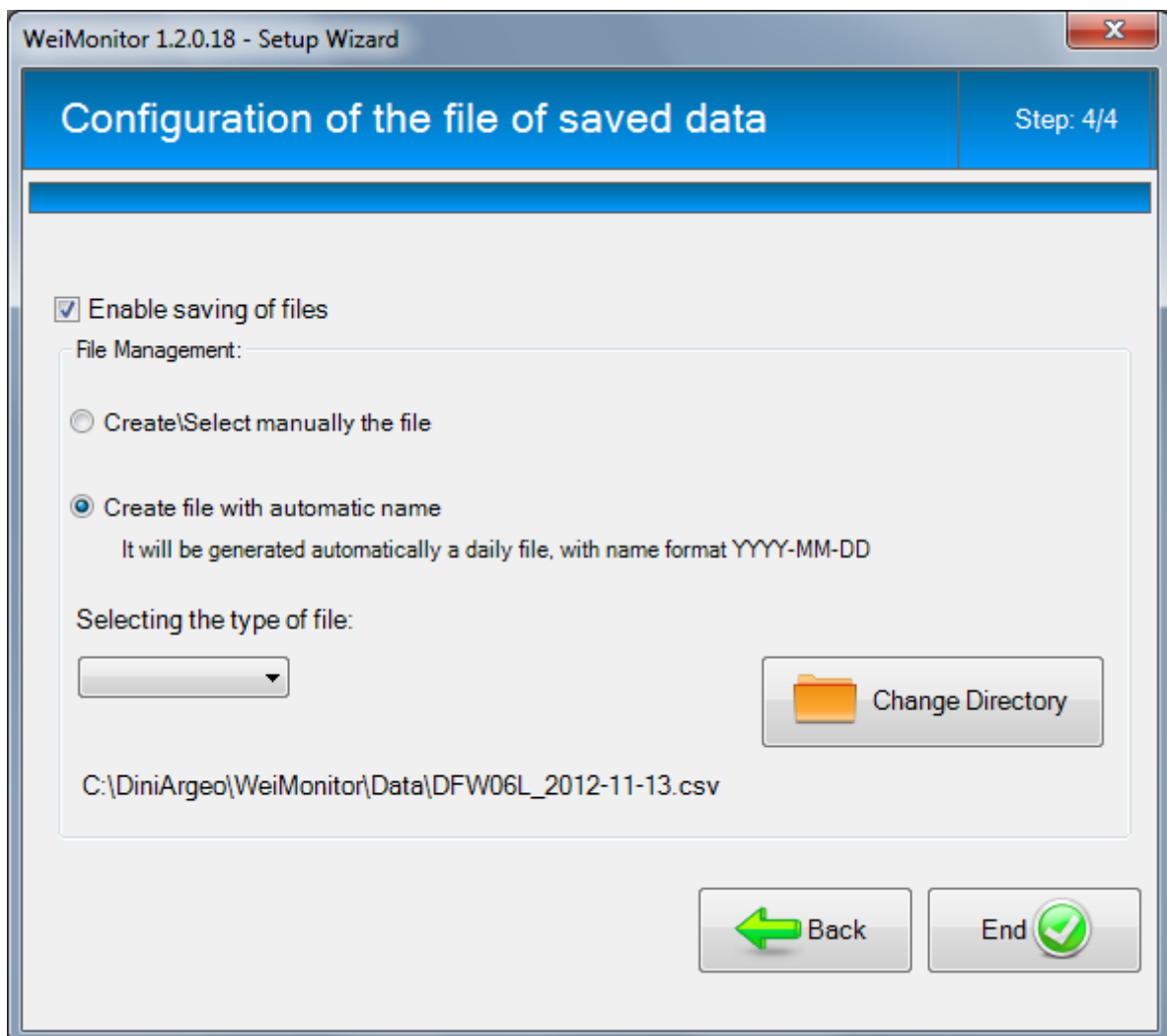


Figure 16 – Saving the File

4 Main screen

The main screen contains all the set scales (FULL version only).

For each scale, you can choose whether to display the list of weighs made or track its progress through the graph.

Each scale is connected to a resettable activity by the *Configure* button.

WeiMonitor - [3590M302]

Tools Windows Help

Start Stop Clear Configure Delete

3590M302

0000.137 kg

>T<
>0<

Weights Graph Emulation

Select the data to save

<input checked="" type="checkbox"/> Date	<input checked="" type="checkbox"/> Time	<input checked="" type="checkbox"/> ScaleNumber	<input checked="" type="checkbox"/> Gross	<input checked="" type="checkbox"/> Tare	<input checked="" type="checkbox"/> Pieces	<input checked="" type="checkbox"/> PMU
01/03/2012	11:18:37	1	1.154kg	0.000kg	ON	0.0000 g
01/03/2012	11:18:38	1	1.103kg	0.000kg	ON	0.0000 g
01/03/2012	11:18:39	1	1.152kg	0.000kg	ON	0.0000 g
01/03/2012	11:18:40	1	1.040kg	0.000kg	ON	0.0000 g
01/03/2012	11:18:41	1	1.013kg	0.000kg	ON	0.0000 g
01/03/2012	11:18:42	1	1.025kg	0.000kg	ON	0.0000 g
01/03/2012	11:18:43	1	1.052kg	0.000kg	ON	0.0000 g
01/03/2012	11:18:44	1	1.086kg	0.000kg	ON	0.0000 g
01/03/2012	11:18:45	1	1.103kg	0.000kg	ON	0.0000 g
01/03/2012	11:18:46	1	1.102kg	0.000kg	ON	0.0000 g
01/03/2012	11:18:48	1	1.116kg	0.000kg	ON	0.0000 g
01/03/2012	11:18:49	1	1.133kg	0.000kg	ON	0.0000 g
01/03/2012	11:18:50	1	1.119kg	0.000kg	ON	0.0000 g
01/03/2012	11:18:51	1	1.125kg	0.000kg	ON	0.0000 g
01/03/2012	11:18:52	1	1.156kg	0.000kg	ON	0.0000 g
01/03/2012	11:18:53	1	1.153kg	0.000kg	ON	0.0000 g
01/03/2012	11:18:55	1	1.171kg	0.000kg	ON	0.0000 g
01/03/2012	11:18:56	1	1.181kg	0.000kg	ON	0.0000 g
01/03/2012	11:18:57	1	1.182kg	0.000kg	ON	0.0000 g
01/03/2012	11:18:58	1	1.182kg	0.000kg	ON	0.0000 g
01/03/2012	11:18:59	1	1.165kg	0.000kg	ON	0.0000 g
01/03/2012	11:19:00	1	1.141kg	0.000kg	ON	0.0000 g

DINI ARCEO
Scales - Weighing systems

EN Status: FULL version DB connection OK

Figure 77 – Main screen (weights)

The part related to the graph can be customized in its display by selecting the type of value (all columns are visible in the table of weights).

3 lines can also be inserted to indicate the thresholds of tolerance.

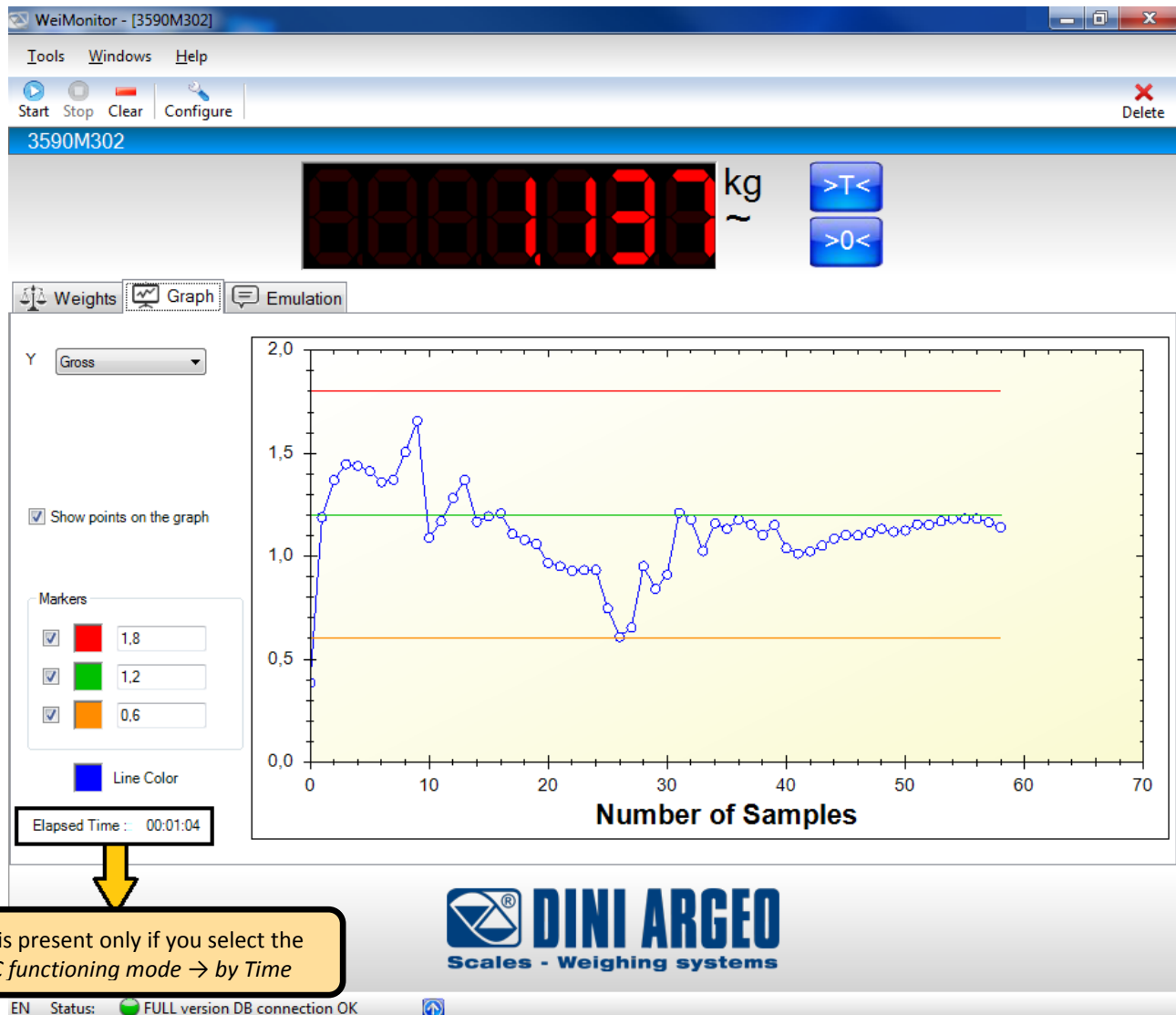


Figure 18– Main screen (Graphic)

On the weight screen, you can choose the columns to display and save to a file (if this last option is enabled) by selecting *Selects data to be saved*.

By clicking on its name, each column has the ability to change its heading, choose its size and

decide to enable it in case of saving.

<input checked="" type="checkbox"/>	Date	<input checked="" type="checkbox"/>	Time	<input type="checkbox"/>	Stability	<input type="checkbox"/>	Scale	<input checked="" type="checkbox"/>	Gross
	01/03/2012		11:18:22		US		1		0.934kg
	01/03/2012		11:18:23		US		1		0.747kg
	01/03/2012		11:18:25		US		1		0.609kg
	01/03/2012		11:18:26		US		1		0.655kg
	01/03/2012		11:18:27		US		1		0.952kg
	01/03/2012		11:18:28		US		1		0.841kg

Figure 19 – Column selection (weights)

In a *Pc functioning mode*, certain information regarding the scale are present:

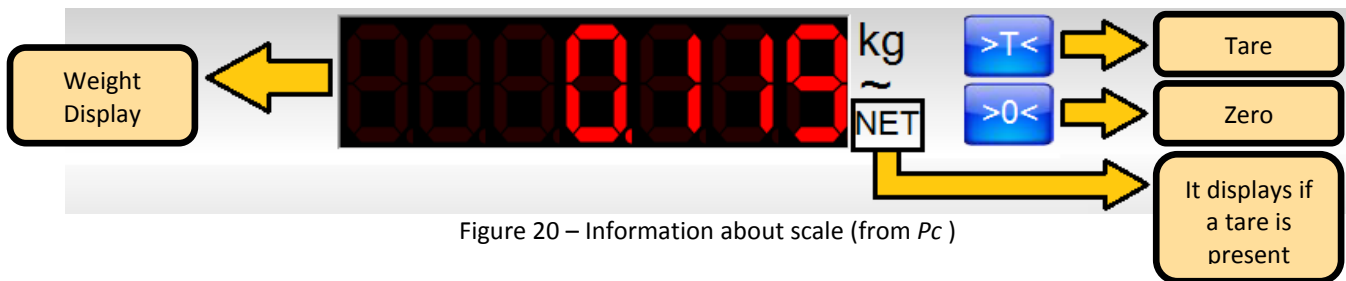


Figure 20 – Information about scale (from Pc)

Every activity has its own toolbar that adjusts its state and manages the scale:

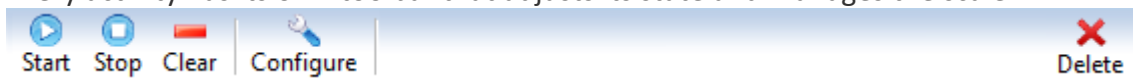


Figure 21 – Toolbar activity

The emulation of writing allows you to write the weight in another active window, such as for instance storing the weight of a running file such as Excel, Word or any other program running.

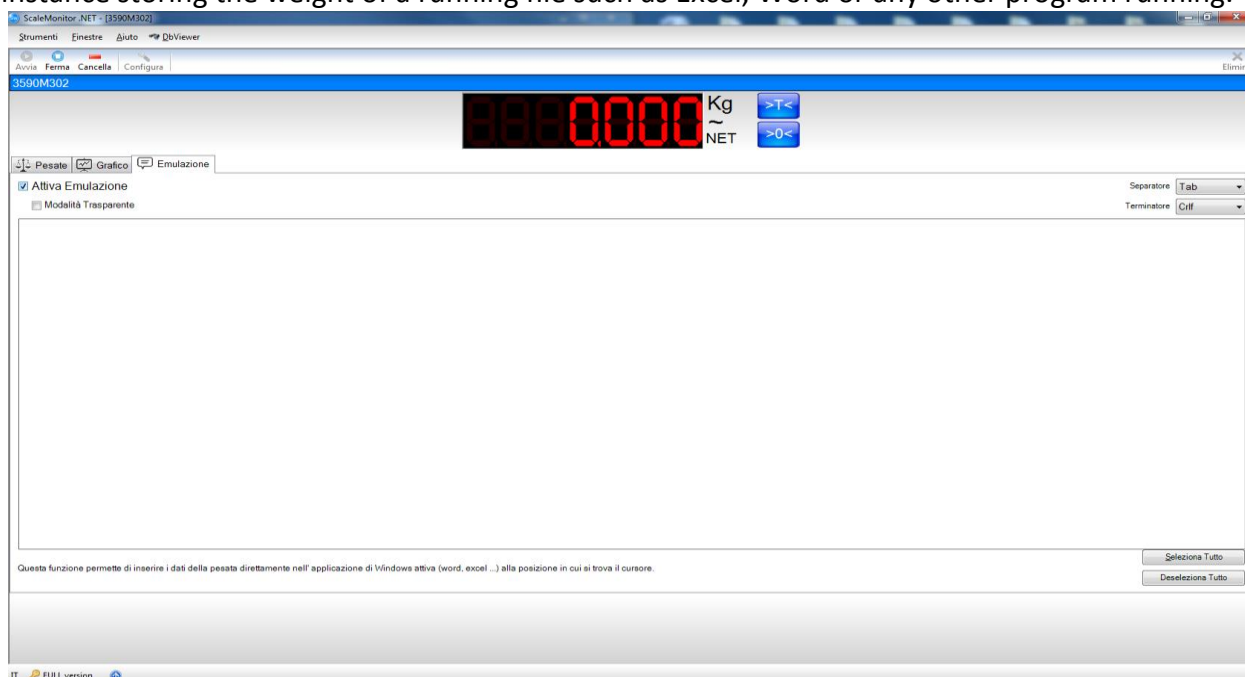


Figura 22 – Main screen (Emulation)

If, in addition to emulation, you also activate the transparent mode, it is possible to write in emulation everything that is sent from the scale, including special characters and key combinations.

For example, in order to make CTRL + HOME, you must digit ^ {HOME}.

Here's the full table:

Key	Code
BACKSPACE	{BACKSPACE}, {BS}, or {BKSP}
BREAK	{BREAK}
CAPS LOCK	{CAPSLOCK}
DEL or DELETE	{DELETE} or {DEL}
DOWN ARROW	{DOWN}
END	{END}
ENTER	{ENTER} or ~
ESC	{ESC}
HELP	{HELP}
HOME	{HOME}
INS or INSERT	{INSERT} or {INS}
LEFT ARROW	{LEFT}
NUM LOCK	{NUMLOCK}

PAGE DOWN	{PGDN}
PAGE UP	{PGUP}
PRINT SCREEN	{PRTSC} (reserved for future use)
RIGHT ARROW	{RIGHT}
SCROLL LOCK	{SCROLLLOCK}
TAB	{TAB}
UP ARROW	{UP}
F1	{F1}
F2	{F2}
F3	{F3}
F4	{F4}
F5	{F5}
F6	{F6}
F7	{F7}
F8	{F8}
F9	{F9}
F10	{F10}
F11	{F11}
F12	{F12}
F13	{F13}
F14	{F14}
F15	{F15}
F16	{F16}
Keypad add	{ADD}
Keypad subtract	{SUBTRACT}
Keypad multiply	{MULTIPLY}
Keypad divide	{DIVIDE}

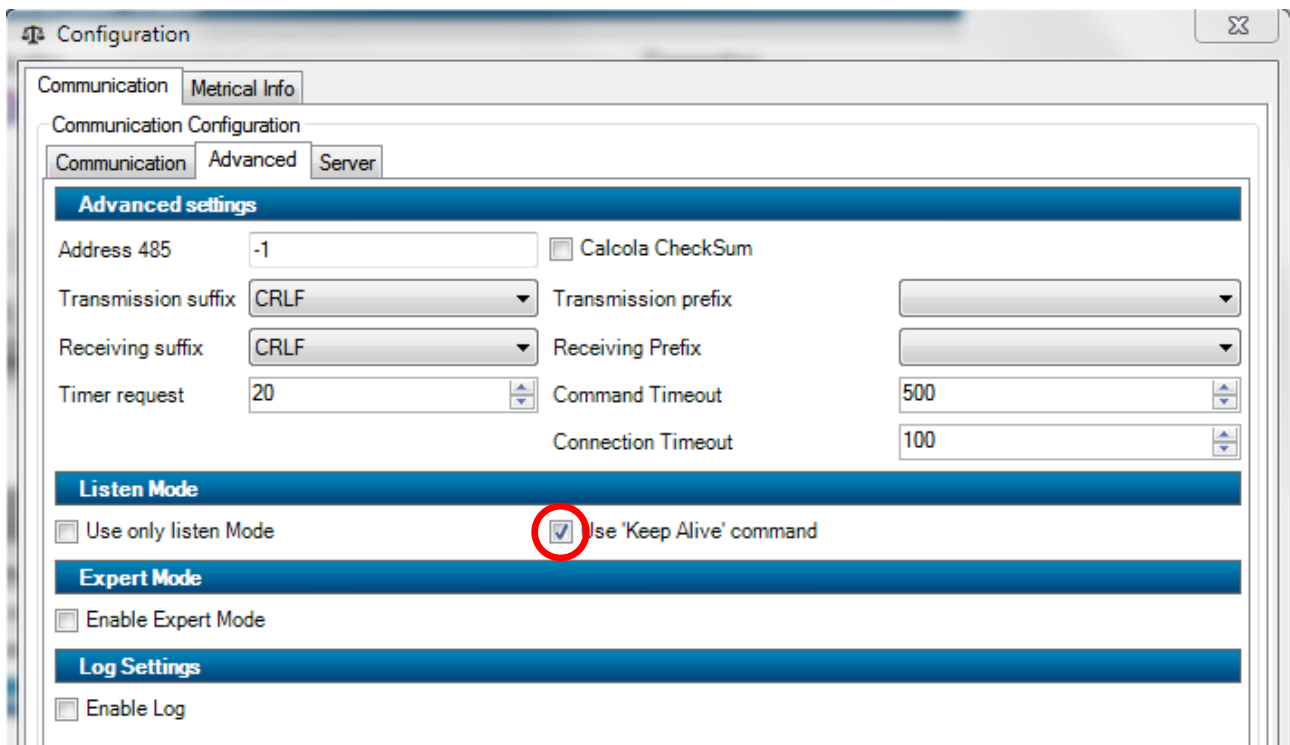
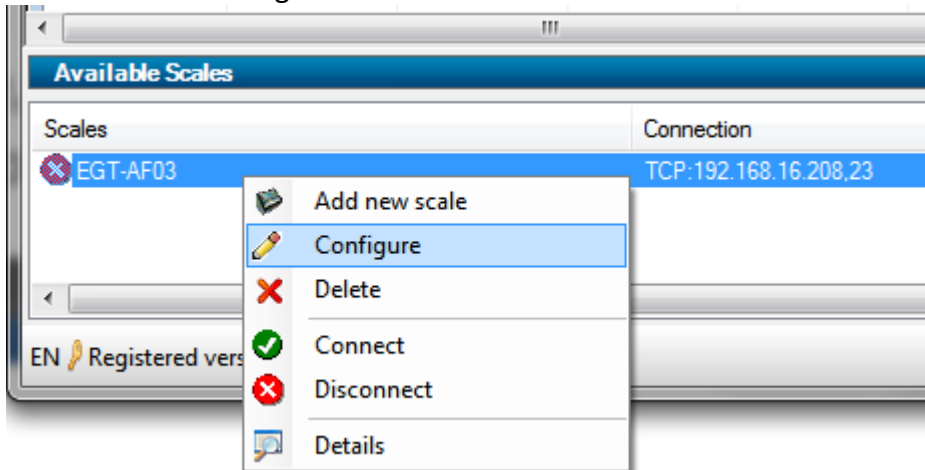
Specifically, any combination formed using keys SHIFT, CTRL and ALT can be done by putting first the following codes.

Key	Code
SHIFT	+
CTRL	^
ALT	%

5 Advanced modes

5.1.3 WIFI conection

In the case the scale is connected using WIFI interface, it is necessary to enable the KEEP ALIVE into Advanced settings



And set the TCP timeout to 31 on the WIFITD

Socket timeout seconds (0 for no timeout)

(see ETHD/WIFITD manual)

6 Warranty and user license

Ownership of the software

It is expressly forbidden to copy, modify, resell and/or distribute the software without the explicit consensus of Syntweb.

The products developed by **Syntweb** are of the exclusive ownership of **Syntweb**. Any reference to other firms and/or registered marks owned by other firms may be cited only for the purpose of plain reference.

Warranty

Syntweb guarantees that the software will work in substantial conformity with the analysis, manuals and the documents accompanying the product, for a period of 90 days from the date of purchase (for standard software) or from the date of testing (for special software): for this entire time period the customer will have to test the software in its entirety and communicate any inexactness to **Syntweb** who commits itself to supply all the necessary assistance in order to resolve any inexactness, functioning problem, or "bug" (expressly recognized as that) of the released software, in the shortest time possible.

Once 90 days have passed from the software release any modification or variation to the software must be regularly invoiced as an intervention of modification.

Syntweb does not guarantee the functioning of the software on machines that do not satisfy the specified requirements or on which are installed products by third parties who interfere directly or indirectly with the functioning of the software.

In case of installation, removal or replacement of any network device that modify the MAC address of the hardware on which the software has been installed, the software license will be invalidated and the software will stop to work.

If the software is installed on a virtual machine, the machine requires Internet connection. Should the machine fail to connect to Internet for more than 45 days the software will cease to work. Specific warning advice will inform the user of this event starting from the first day of lack of connection and then for the following 44 days. At the end of this period the software will stop to function until a new connection to Internet will be established.

Declaration of responsibility

In no event will **Syntweb** be liable for the damages (including, without limitations, the damage caused by loss of profits, interruption of the activities, loss of data, or other economic losses) deriving from the use of the software, even in the case that **Syntweb** has been advised of the possibility of such damages.